

# CAST YOUR BALLOT!

## WHICH STEPS HAVE YOU TAKEN FOR YOUR RESEARCH REPORT?

- A** • FINISHED WITH MY KWL CHART, RESOURCE AND NOTE TAKING CHART.
- B** • FINISHED WITH MY KWL CHART, STILL WORKING ON THE RESOURCE AND/OR NOTE TAKING CHARTS.
- C** • STILL WORKING ON MY KWL CHART.
- D** • UH OH SPAGHETTIO'S!!! I HAVEN'T STARTED ANYTHING YET!!!

# Composition Unit 5 Lesson 9 part 2

## Thesis Statement

**Essential Question:**  
How do I write a Thesis Statement?

### PA Standards/Anchors

- 1.4.8B Write multi-paragraph informational pieces
- 1.5.8A Write with a clear focus, identifying topic, task and audience
- 1.5.8C Write with controlled and/or subtle organization
- 1.5.8F Use grade appropriate conventions of language when writing and editing

### Objectives

- ...write a thesis statement for your research paper!



# Whiteboard Warm Up

What do you think a *Thesis Statement* is??

# What is a Thesis Statement?

- Your thesis statement is the main idea of your research report.
- All of the information you include in your report should support the thesis statement.

## A SUCCESSFUL THESIS STATEMENT:



- is usually one sentence
- is a statement, not a question
- identifies the subject of the paper
- takes a stand rather than simply announcing a subject

# The BIG Question...

Who is \_\_\_\_\_ and why is he/she an inspirational person?

*This is what you are answering when you write your report.*

Your **thesis statement** answers the question in one sentence.

The **body of your paper** answers the question in many more sentences with lots of details.

# What does a good *thesis* do?

Answers  
the  
question

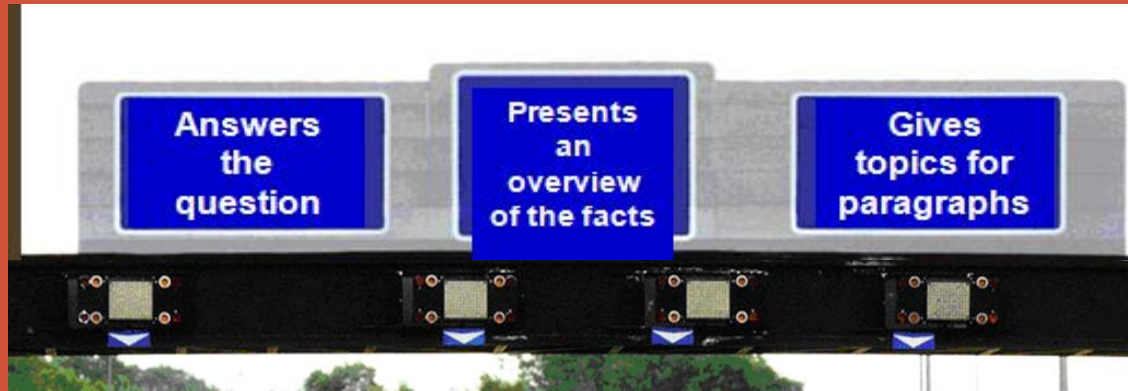
Presents  
an  
overview  
of the facts

Gives  
topics for  
paragraphs

**The road to a great essay starts with  
an excellent thesis!**



# The 3 Rules of a Good *Thesis*

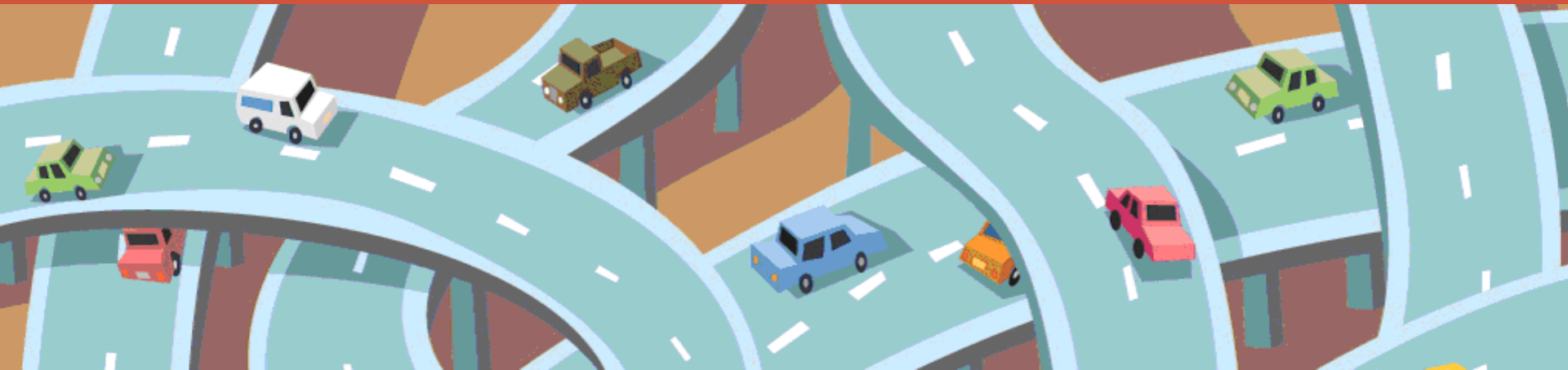


- 1) Answers the question.
  - Be specific.
- 2) Presents and overview of the facts.
  - The reader should be given a preview of the facts you will explore.
- 3) Mentions the topics for your supporting paragraphs.
  - Tell how your paper is going to be organized.

# Research Report = Trip

## YOU (the writer) = Tour Guide

If a report is like going on a trip, then the writer is the tour guide because the tour guide gets to decide what is important for the readers, the people taking the trip, to see. But first, the tour guide must find out lots of information about the topic....





# Thesis Statement = Road Map

Then, the tour guide must develop a plan for taking the people through the 3 places (paragraphs) which will give them the most information about the topic and support the writer's position on the topic.

In one sentence, the writer will tell the readers where they are going and why. That's a ***thesis***.

For example...



# Ideas for a Good Thesis

- **Don't** ask a question.
- **Don't** use first or second person – I, you, we
- **Don't** use qualifiers that make you sound uncertain such as *might, maybe, perhaps, etc.*
- **Don't** use absolute qualifiers such as *everything, all, none, always, never.* These are too hard to prove!

# Thesis Types to Avoid

“Have you ever thought about the Alamo?”

(Don't use a question or the word “you.”)

“California has many problems such as air pollution in Los Angeles, traffic on I-5, earthquakes in San Francisco, high cost of living in San Jose and the government has a lot of debt.”

(The list is too long and too specific – don't write the whole essay in the thesis.)

# Which Thesis is Best?

*Who is the most valuable player in the NBA?*

- A. Does LeBron James's ability to score makes him the league's most valuable player?
- B. LeBron James's ability to score, pass, and rebound make him the league's most valuable player.
- C. I believe LeBron James's ability to score, pass, and rebound just might make him the league's most valuable player.



*Who is the most valuable player in the NBA?*

Answer:

B) LeBron James's ability to score, pass, and rebound make him the league's most valuable player.

Does the thesis:

1) Answer the question?

Yes, answers *who*- LeBron James.

2) Present facts.

Yes, puts forth *evidence*.

3) Mention the topics for your supporting paragraphs.

Yes, score, pass and rebound will be discussed in the supporting paragraphs.



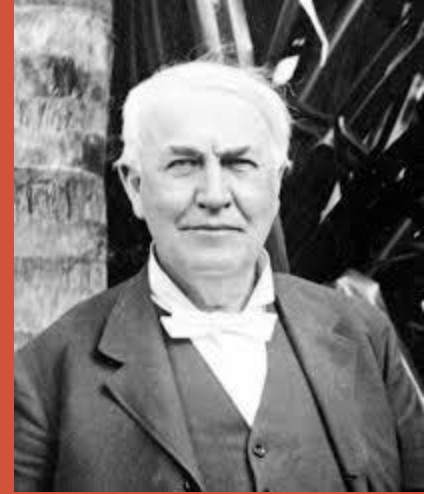
# What do *you* think?



Thesis: The Waterloo Campaign was a disaster for Napoleon because it destroyed most of the French armed forces, exposed Napoleon's personal weaknesses, and decreased his support among the French people.

*Why is this an acceptable thesis statement??*

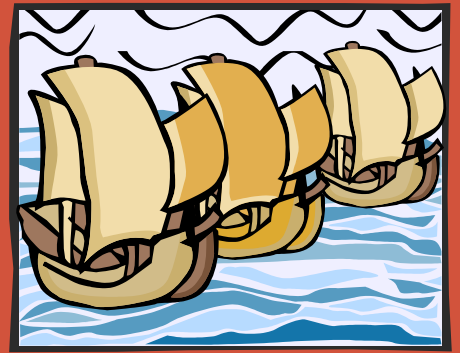
What do *you* think?



Thesis: The life of Thomas Edison had a lasting impact on the world.

*Why is this an UNACCEPTABLE thesis statement?*

What do *you* think?



Thesis: My report is on how Christopher Columbus discovered America in 1492.

*Why is this an UNACCEPTABLE thesis statement??*



# What do *you* think?



Thesis: Benjamin Franklin was inspirational because he lived an extraordinary long life as a writer and scientist, inventor, and role model.

*Is this an acceptable thesis statement? Why or why not?*

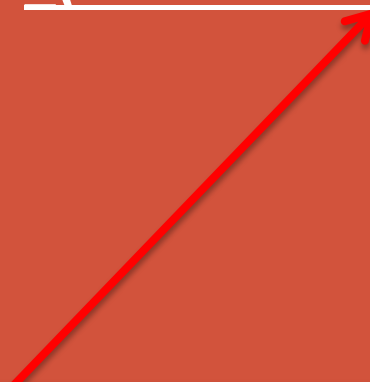
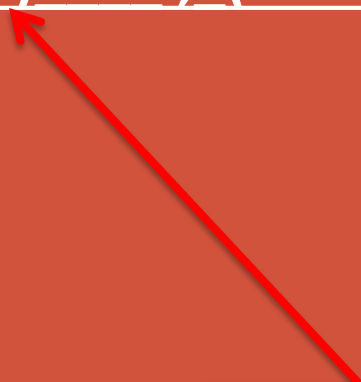
# Review



Be specific!



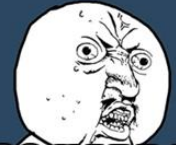
(List your historical figure here ) is inspirational because (first subtopic) , (second subtopic), and (third subtopic).



Who will your report be about?  
What will your audience learn about  
your topic? What makes him/her inspirational?

# Write your thesis statement!

THESIS STATEMENT



Y U SO HARD TO  
THINK OF

memegenerator.net

1. Practice writing your thesis statement using a blank Word document.

For Example:

**(List your historical figure here) is inspirational because (first topic), (second topic), and (third topic).**

*Remember- these 3 topics are the ones you are going to be explaining in the body of your paper! You should have already chosen your topics. We went over this in class yesterday.*

2. The FINAL COPY goes in SAPPHIRE and is due by Friday May 29<sup>th</sup>. We will go over the OUTLINE part of your Research report in class next week.
3. If you haven't done so yet, please turn in your KWL CHART, RESOURCE CHART, AND NOTE TAKING CHART IN SAPPHIRE!!
4. If you have any questions send me a kmail and COME TO OFFICE HOURS.